



Siedle-Türsprech-Set

SET 811-1 /-2

SET 811-1 /-2 / 120 V

Siedle door intercom set

SET 811-1 /-2

SET 811-1 /-2 / 120 V

Kit interphone Siedle

SET 811-1 /-2

SET 811-1 /-2 / 120 V

Kit citofonico Siedle

SET 811-1 /-2

SET 811-1 /-2 / 120 V



Siedle-Deursprek-Set

SET 811-1 /-2

SET 811-1 /-2 / 120 V

Siedle-dørtelefonsæt

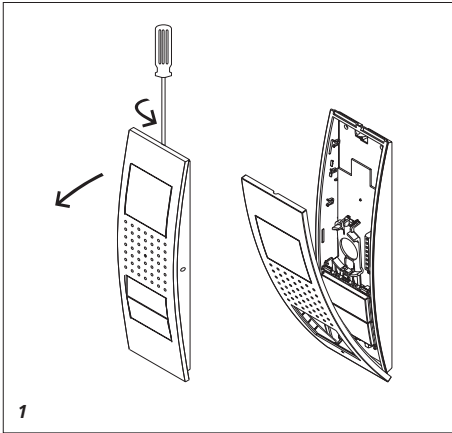
SET 811-1 /-2

SET 811-1 /-2 / 120 V

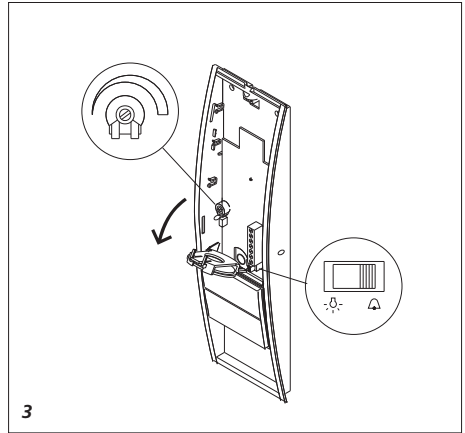
Siedle-dörrhögtalarset

SET 811-1 /-2

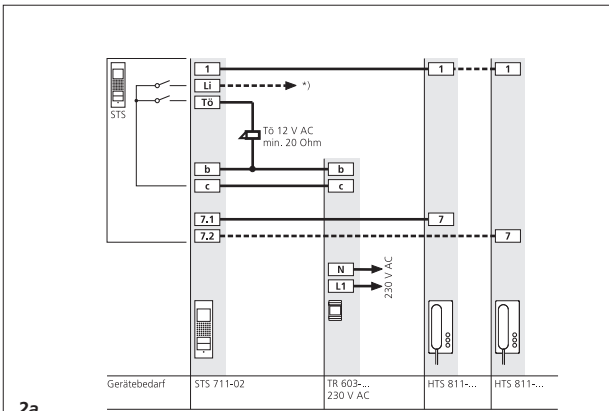
SET 811-1 /-2 / 120 V



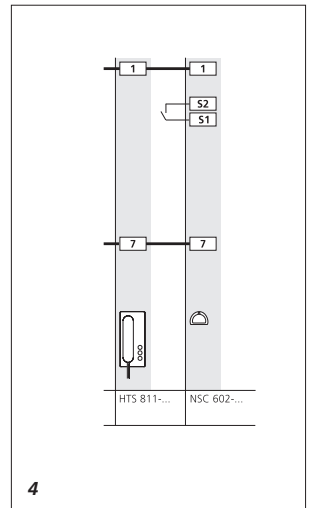
1



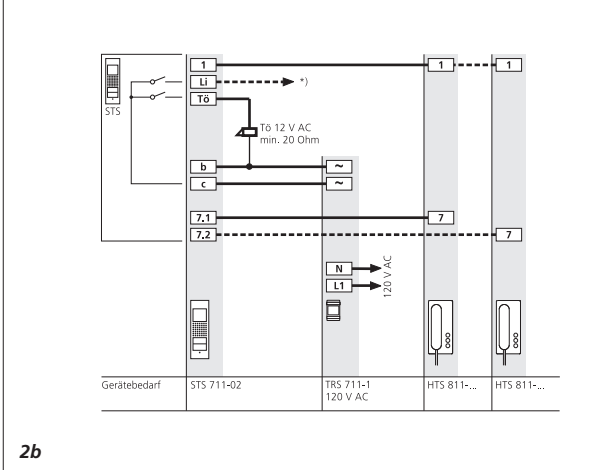
3



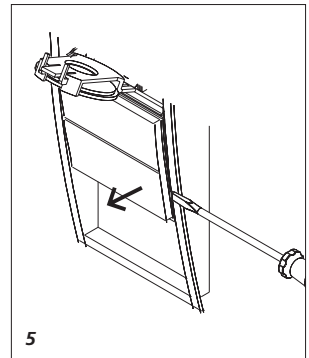
2a



4



2b



5

Installation

Siedle door intercom set

for one-family or two-family homes. With the basic functions calling, speech and door release. Illuminated information panel.

Electrical voltage



Mounting, installation and servicing work on electrical devices may only be performed by a suitably qualified electrician.

Scope of supply SET 811-1

- 1 Set door loudspeaker
STS 711-01
- 1 in-house telephone HTS 811-0
- 1 transformer TR 603-0
- This product information

Scope of supply SET 811-2

as described above, but

- 2 in-house telephones HTS 811-0

Scope of supply

SET 811-1 / 120 V

- 1 Set door loudspeaker
STS 711-01
- 1 in-house telephone HTS 811-0
- 1 transformer TRS 711-1
- This product information

Scope of supply

SET 811-2 / 120 V

as described above, but

- 2 in-house telephones HTS 811-0

Mounting

1 Unscrew the front panel and mount the door loudspeaker. Hinge forward the loudspeaker fixture and connect the cable.

Installation

2a Connect in accordance with the terminal diagram.

2b Terminal diagram for 120 V version.

The story call (ERT) at the in-house telephone must not be connected.

Range from the transformer to the door station max. 50 m, transformer to the in-house telephone 400 m with 0.8 mm conductor material. When operating two in-house telephones in parallel, the range is reduced to 200 m.

**) If only 1 HTS 811-... is connected, the upper bell button can be used as a light button (terminal LI). Use the remote switching relay 12 V AC.*

3 Switch over if the bell button is to be used as a light button. Set the volume using the potentiometer.

4 The secondary signal controller NSC 602-... can be used in parallel to an in-house telephone, e.g. to actuate a radio-operated chime. The NS 711-... can be operated as an additional signalling unit in parallel at an HTS 811-...

Lettering

5 Exchange the name plates.

Specifications

- Protection system door loudspeaker IP 54
- Dimensions:
Door station 85 x 290 x 35 mm
Telephone 90 x 200 x 45 mm
Transformer 53.5 x 89 x 60 mm

SSS SIEDLE

S. Siedle & Söhne

Postfach 1155
D-78113 Furtwangen
Bregstraße 1
D-78120 Furtwangen

Telefon +49 7723 63-0
Telefax +49 7723 63-300
www.siedle.de
info@siedle.de

© 2006/05.06
Printed in Germany
Best. Nr. 0-1101/035829